



Patons® Divine
DIVINE SNOWFLAKE SWEATER

Sizes

Bust measurement

Extra-Small	32 ins	[81 cm]
Small	34 ins	[86 cm]
Medium	36 ins	[91 cm]
Large	38 ins	[97 cm]
Extra-Large	40 ins	[102 cm]

Finished bust

Extra-Small	36½ ins	[92.5 cm]
Small	39 ins	[99 cm]
Medium	40½ ins	[103 cm]
Large	43 ins	[109 cm]
Extra-Large	46 ins	[117 cm]

Materials

Patons® Divine (100 g)

Sizes

XS (S-M-L-XL)

Main Color (MC)

(06011 Soft Earth)

5 (5-6-6-7) balls

Contrast A (06006 Icicle White)

1 (1-1-1-1) ball

Sizes 5½ mm (U.S. 9) and 6 mm (U.S. 10) knitting needles **or size needed to obtain tension**. 4 st holders.

Tension

12 sts and 16 rows = 4 ins [10 cm] in stocking st with larger needles.

Instructions

The instructions are written for smallest size. If changes are necessary for larger sizes the instructions will be written thus ().

Note: When working from charts, carry yarn **loosely** across WS of work but never over more than 5 sts. When it must pass over more than 5 sts, weave it over and under color in use on next st or at center point of sts it passes over.

FRONT

With MC and smaller needles, cast on 54 (58-58-62-66**) sts.

1st row: (RS). K2. *P2. K2. Rep from * to end of row.

2nd row: P2. *K2. P2. Rep from * to end of row.

Rep these 2 rows (K2. P2) ribbing until work from beg measures 3 ins [7.5 cm] ending with a 2nd row and inc 1 (**1-3-3-3**) st(s) evenly across last row. 55 (**59-61-65-69**) sts.

Change to larger needles and proceed in stocking st for 4 rows. Work Chart I to end of chart reading **RS** rows from **right** to left and **WS** rows from **left** to right noting 6 st rep will be worked 9 (**9-10-10-11**) times.

With MC, cont even until work from beg measures 13 (**13½-14-14-14½**) ins [33 (**34.5-35.5-35.5-37**) cm] ending with RS facing for next row.

Place Chart II: Next row: K15 (**17-18-20-22**). Work row 1 of Chart II across next 25 sts. With MC, knit to end of row.

Chart II is now in position.

Cont working Chart II until work from beg measures 16 (**16½-16½-16½-16½**) ins [40.5 (**42-42-42-42**) cm], ending with RS facing for next row.

Shape raglans: Keeping cont of Chart II (when chart is complete, proceed with MC only), cast off 2 sts beg next 2 rows. 51 (**55-57-61-65**) sts.

Size XS only: Next row: K2. K2tog. Knit to last 4 sts. S11. K1. pss0. K2. 49 sts. Work 3 rows even.

Sizes S, L and XL only: 1st row: K2. K2tog. Knit to last 4 sts. S11. K1. pss0. K2.

2nd row: P2. P2togtbl. Purl to last 4 sts. P2tog. P2.

3rd row: As 1st row.

4th row: Purl.

Rep last 4 rows (**0-1-2**) time(s) more. (**49-49-47**) sts.

All Sizes: Next row: K2. K2tog. Knit to last 4 sts. S11. K1. pss0. K2.

Next row: Purl.**

Rep last 2 rows until there are 29 (**29-31-31-31**) sts ending with RS facing for next row.

Shape neck: Next row: K2. K2tog. K6 (neck edge).

Turn. Leave rem sts on a spare needle.

Purl 1 row.

Cont dec at raglan edge as before on next and following alt rows, AT SAME TIME, dec 1 st at neck edge on next and following alt rows twice more. 3 sts.

Purl 1 row.

Next row: K1. K2tog.

Next row: P2.

Next row: K2tog. Fasten off.

With RS of work facing, slip next 9 (**9-11-11-11**) sts onto a st holder. Join yarn to rem sts. Knit to last 4 sts. Sl1. K1. pssso. K2.

Work to correspond to other side reversing all shapings.

BACK

Work from ** to ** as given for Front, omitting reference to chart II.

Rep last 2 rows until there are 19 (**19-21-21-21**) sts ending with RS facing for next row. Leave sts on a st holder.

SLEEVES

With MC and smaller needles, cast on 26 (**26-30-30-30**) sts.

Work 5 ins [12.5 cm] in (K2. P2) ribbing as given for Front ending on a 2nd row and inc 3 (**3-1-1-1**) st(s) evenly across last row. 29 (**29-31-31-31**) sts.

Change to larger needles and proceed in stocking st for 4 rows.

Work Chart III to end of chart reading **RS** rows from **right** to left and **WS** rows from **left** to right, noting 6 st rep will be worked 4 (**4-5-5-5**) times.

With MC, purl 1 row.

Cont in stocking st, inc 1 st each end of next and following 4th rows until there are 41 (**41-41-41-45**) sts, then every following 6th row until there are 49 (**49-51-51-53**) sts.

Cont even until work from beg measures 20½ (**21-21-21½-21½**) ins [52 (**53.5-53.5-54.5-54.5**) cm] ending with RS facing for next row (there is a 2½ ins cuff turnback allowed here).

Shape raglans: Cast off 2 sts beg next 2 rows. 45 (**45-47-47-49**) sts.

1st row: K2. K2tog. Knit to last 4 sts. Sl1. K1. pssso. K2.

2nd row: P2. P2togtbl. Purl to last 4 sts. P2tog. P2.

3rd row: As 1st row.

4th row: Purl.

Rep last 4 rows once more. 33 (**33-35-35-37**) sts.

Next row: K2. K2tog. Knit to last 4 sts. Sl1. K1. pssso. K2.

Next row: Purl.

Rep last 2 rows until there are 7 sts ending with RS facing for next row. Leave rem sts on a st holder.

Finishing

Pin garment pieces to measurements. Cover with a damp cloth leaving cloth to dry.

Collar: Sew raglan seams leaving left back raglan seam open. With RS of work facing, MC and smaller needle, K7 from left sleeve st holder. Pick up and knit 9 sts down left front neck edge. K9 (**9-11-11-11**) from front st holder. Pick up and knit 9 sts up right front neck edge. K7 from right sleeve st holder. K19 (**19-21-21-21**) from Back st holder, inc 2 sts evenly across. 62 (**62-66-66-66**) sts.

Beg on a 2nd row, work in (K2. P2) ribbing as given for Front until Collar measures 4 ins [10 cm]. Change to larger needles and cont in ribbing until Collar measures 7½ ins [19 cm] ending with RS facing for next row. Cast off in ribbing.

Sew left raglan and Collar seam, reversing for turnback.

Sew side and sleeve seams, reversing seam on sleeve 2½ ins [5 cm] from bottom for turnback.

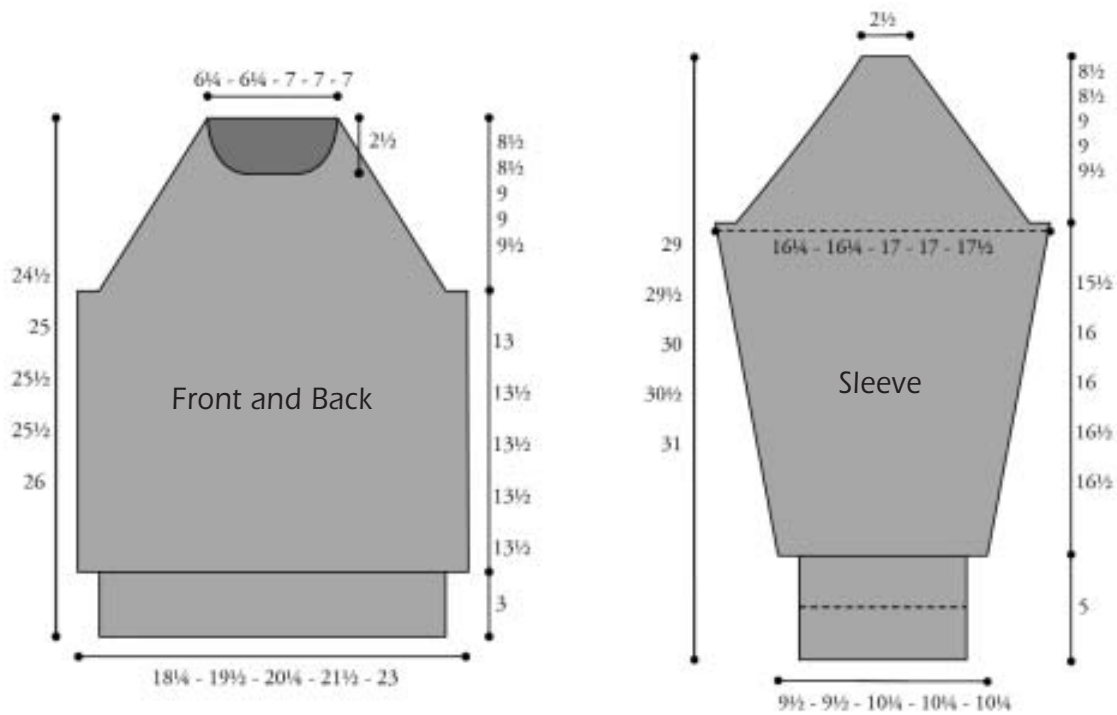


Chart I

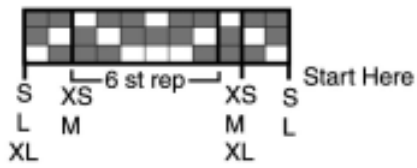
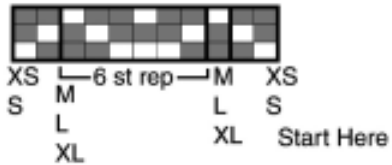


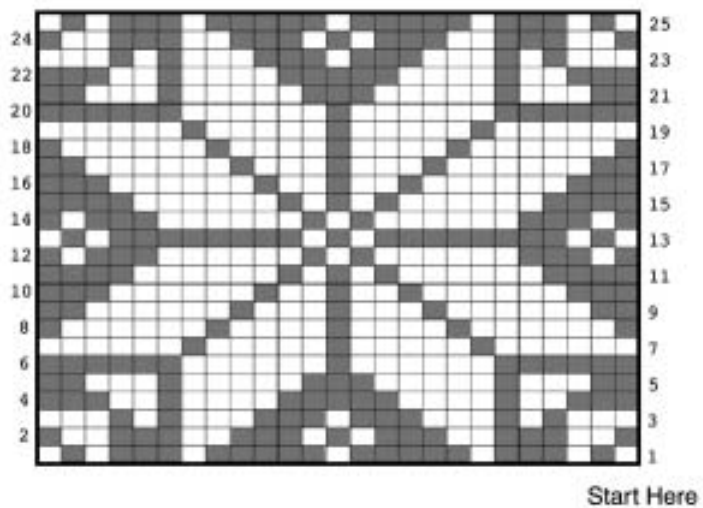
Chart III



Key

- = MC
- = Contrast A

Chart II



Patons

... a part of your life.

P.O. Box 40 Listowel ON N4W 3H3